

Top view 16*16mm Neon IK10/IP68



Factory: Building 9 & 10, WanYang park ,baoyong industry road No 8 ,
west area baoyong industry zone, longjiang town, Shunde District, Foshan city.

www.mingxueled.com



16*16mm Neon

- Silicone led neon light,top view,16*16mm
- Light source: High luminous efficiency, LM80 proved; High light transmittance, environmental silicone material,IP68;
- IK10,Resistance to saline solutions, acids & alkali,corrosive gases and UV;
- OEM ODM is acceptable



STRUCTURE

Item Code	Input voltage	Watt/m	CCT/K	Color Rendering Index	Lm/m	Lm/ft	LM/w	IP Rate	Max.run length
MN328W140E90-D027A6E10107N-1616ZA1	24V	10W	2700k	>90	594	181	59	IP68	5m
MN328W140E90-D030A6E10107N-1616ZA1	24V	10W	3000k	>90	627	191	63	IP68	5m
MN328W140E90-D040A6E10107N-1616ZA1	24V	10W	4000k	>90	660	201	66	IP68	5m
MN328W140E90-D050A6E10107N-1616ZA1	24V	10W	5000k	>90	660	201	66	IP68	5m
MN328W140E90-D065A6E10107N-1616ZA1	24V	10W	6500k	>90	660	201	66	IP68	5m

Note: 1、 Considering the waterproof performance of the light strip, it is not recommended that customers cut it by themselves. The length can be customized in multiples of 50MM
 2、 Due to the nature of blended modified polymer products, the length of the light strip may vary by $\pm 15\text{mm}$ at both ends.

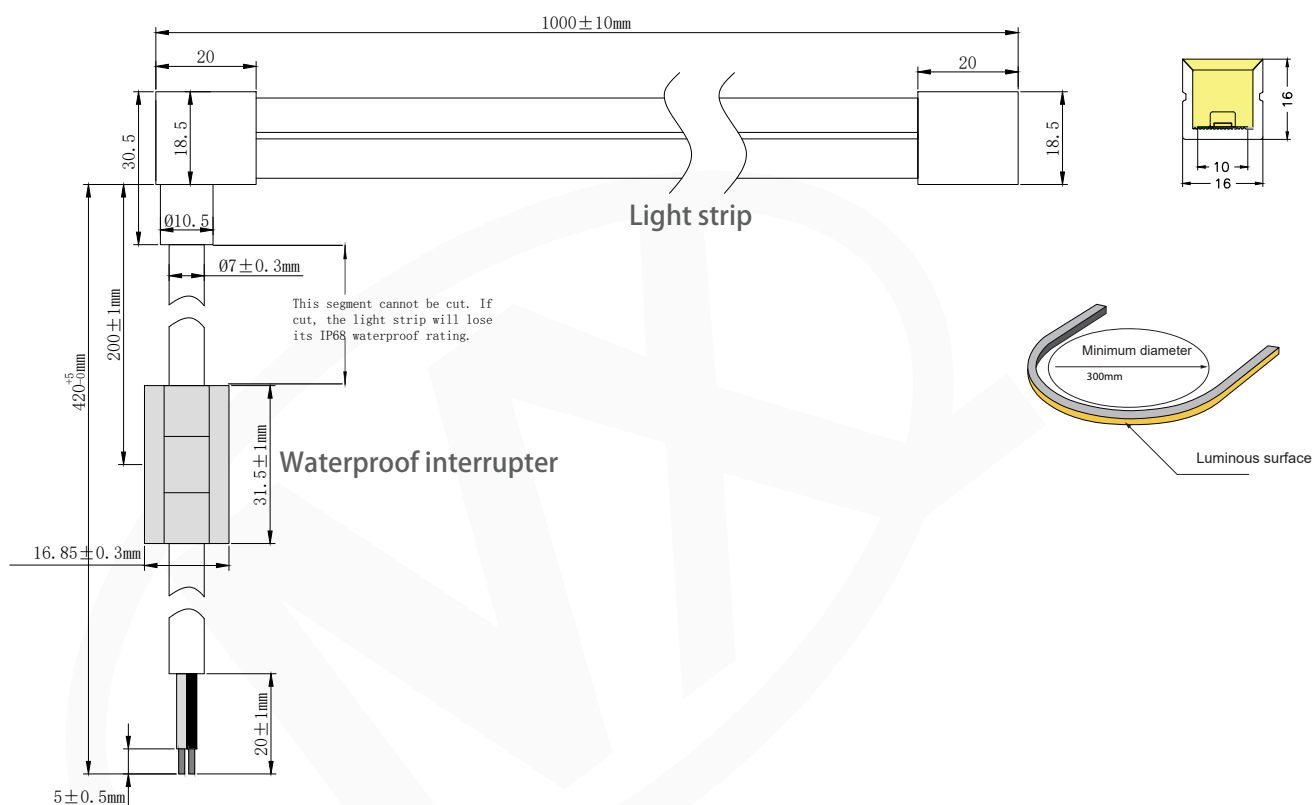
Optical parameter

LED Type:	SMD2835
Color Rendering Index:	>90
CCT Range:	2700-6500K
Irritation Angle:	120°
Light Efficiency:	59-66Lm/w
Lumen Output/meter:	594~660Lm/m (181~201Lm/ft)
IK/IP Grade:	IK10/IP68

Electric parameter

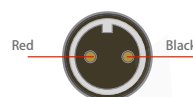
Input Current/m:	0.42(max)A/m(0.13A/ft)
Input Voltage:	DC24V
Power/M:	10W/m(3W/ft)
Static Electricity:	1000V (ESD)
LEDs/Meter:	140LEDs/m
Product Length:	Customized in units of 50mm
LEDs of Section	7LEDs

DRAWING



ELECTRICAL WIRING COLOR CODES

☐ MONOCOLOR



☐ CCT



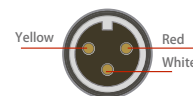
☐ RGB



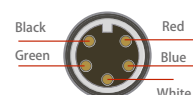
☐ RGBW



O SPI



☐ DMX



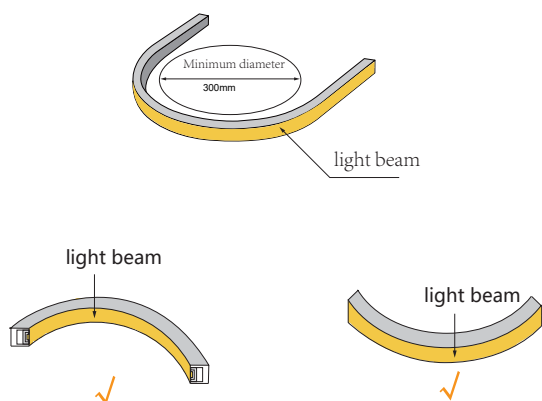
☐ RGB CCT



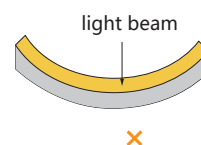
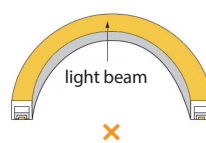
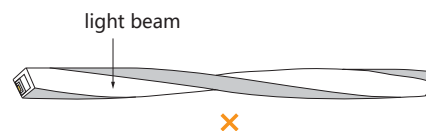
Reliability test of light

TEST TYPE	TESTING ITEM	TEST STANDARD	DESCRIPTION
PHOTOMETRIC TEST	Spectrum Analysis	LM 79	LM 79(lumen,CCT,CRI,XY,SDCM,wave length)
	Photometric Distribution	LM 79	LM 79(lumen intensity distribution&Lux diagram)
	Lumen Maintenance&Life Time	IES LM 80&IES TM28 GB/T24824-2009	LM 80&IES TM28
ELECTRICAL TEST	EMC Test	EMI & EMS	IEC 61547/GBT 18595 IEC 61000-3-2/GB 17625.1
MECHANICS & PHYSICE TESTING	Bending Test Vertical	Mingxue	Manufacturer-defined,100 cycles 3 times bending with 0.5m/s pulling speed
	Bending Test Horizontal	R2	Manufacturer-defined,100 cycles 3 times bending with 0.5m/s pulling speed
	Wrestling test	Mingxue	COB/CSP 500 / SMD 1000. cycles
	Swing Test	UL2388	UL2388,>750 cycles
	Tensile Test	IEC 60598-1; GB7000.1	Manufacture-defined,>the weight of light in maximum connection length wiht both ends feed. With 30Nm if total cross section <0,75 or 60Nm force, pull wire 25 timesduring 1 sec. Mark displacement ≤ 2mm.
	Twist Test	Mingxue	Manufacturer-defined,>200 cycles in 720°
	Curl test	Mingxue	Back and forth 80-100 times
	IK06-08-10	IEC62262	IEC62262 The hammer spring Impact energy 0.7J
	Adhesion test	JB1256-77	3M VHB5952 hung on 2kg loads >7 hrs
	Drop test	IEC68-2-6	IEC68-2-6,GB/T2423/10/95
	Vibration test	ISTA-1A	bear up to 25,4mm amplitude in 14200 cycles
	Winding Test	IEC 60598-1; IEC 60598-2-21; GB-7000.1	φ 150mm cylinder, 60N pull, winding 10 times at (-25°C ±2°C) , and 10 times after(-15°C ±2°C, 16h).
	Electrical strength	IEC 60598-1; IEC 60598-2-21 GB-7000.1	500V
	Product accessories disassembly test	Mingxue	Product accessories are installed and adapted 5-10 times
ENVIRONMENT TESTING	Heating test	IEC 60598-1: 12.4	Sample to be tested under normal installation Under 1.06 times Rating Voltage After 30 minutes.
	Salt Spray Test	IEC 60068-2-11	5% salt solution concentration,5% salt water,35+/-2C for 72hrs
	High temperature and Humidity impact	IEC 60068-2-78 GB/T 2423.3	60+/-2° C for 168 hrs 60°C, 85%RH ,Test light decay data<3%
	Temperature Shock Test	IIEC60068	Manufacturer-defined,-40°C-60°C(typical temperature ange) 168H
	switch test	GB/T24824-2009	30s On, 30s Off, 15000 times;on/off every 30S, > 15000 cycles
	Lifetime aging test	Mingxue	Normal temperature 25°C
	Constant Temperature Test	Mingxue	Manufacturer-defined,60°C to -40° (typical temperature)
	Cold Bend Test	IEC 60598-1; IEC 60598-2-21 GB-7000.1	wound on mandrel,low-temperature (-15°C ±2°C, 16h), around the mandrel for two turns
	Cold Impact test	IEC 60598-1; IEC 60598-2-21 GB-7000.1	Low-temperature (-15°C ±5°C, 16h), hammer falls from a height of 100mm.
	UV Exposure Test	ASTMG154-06	ASTMG 154,ISO 4892-3, UVA@340nm ASTMG154-06, UVA-340 0.68W/m2 for 500 hrs
	IPX5 IPX6 IPX7 IPX8	IEC 60598-1; IEC 60598-2-21 GB-7000.1	IEC60529 IPX5/X6/ IPX7/X8

Bend instruction



Correct bend



Wrong Bend



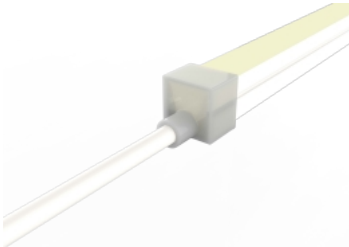
Clip
30*18.9*17.6mm(L x W x H)



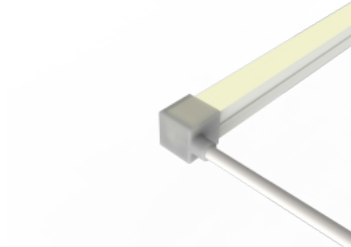
Aluminum channel
1000x18.9x17.6mm(L x W x H)

|| Outlet wire way and cap

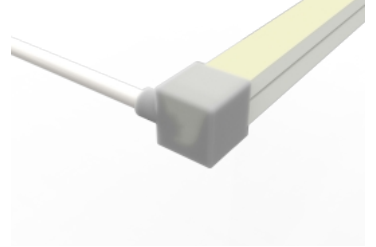
Note: Only show the outlet wire way and cap



Linear Outlet
Plug Fit Composite material Cap



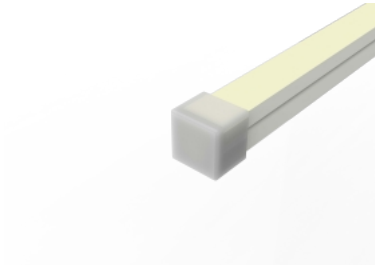
Right Outlet
Plug Fit Composite material Cap



Left Outlet
Plug Fit Composite material Cap



Bottom Outlet
Plug Fit Composite material Cap



End cap
Plug Fit Composite material Cap

Packing



Safety Information

Application notes for led flexible strip

In order to drive LED flexible strip lights safely, it is absolutely necessary to operate them with an electronically stabilised power supply protecting against short circuits, overload and overheating.

To also ease the luminaire/installation approval, electronic control gear, power supply and all electronic accessories for LED or LED modules should carry "CE, or UL" mark and meet the latest safety standard.

- Please use 24VDC isolated power supply to drive the led strip, and the constant voltage source ripple less than 5%. Can't step-down the power by resistance-capacitance and non-isolated power supply driver led strip, etc.
- To ensure the longevity and reliability of the strips, please do not bend the arc diameter 300mm or less, do not fold to avoid damaging the lamp beads or broken.
- To ensure the life and environment of lights, in the use of force can not pull the power cord to avoid damage to prohibit collision LED lights.
- During the installation of positive and negative attention to the power cord, do not pick the wrong voltage power supply and the product are the same, so as to avoid damage to the product.
- LED lights should be stored in dry sealed environment, the proposed storage period should not be too long before using unpacking, the working temperature: -20 ~ +45, Storage temperature: -0 ~ +60, not waterproof lights band indoor use, relative humidity not higher than 70%.
- In practical applications, the power supply should leave 20% margin (recommend using only 80% of the power) in order to ensure a sufficient amount of voltage drive products
- Do not use any acidic, alkaline adhesive securement products (including not limited to glass, plastic, etc.)

