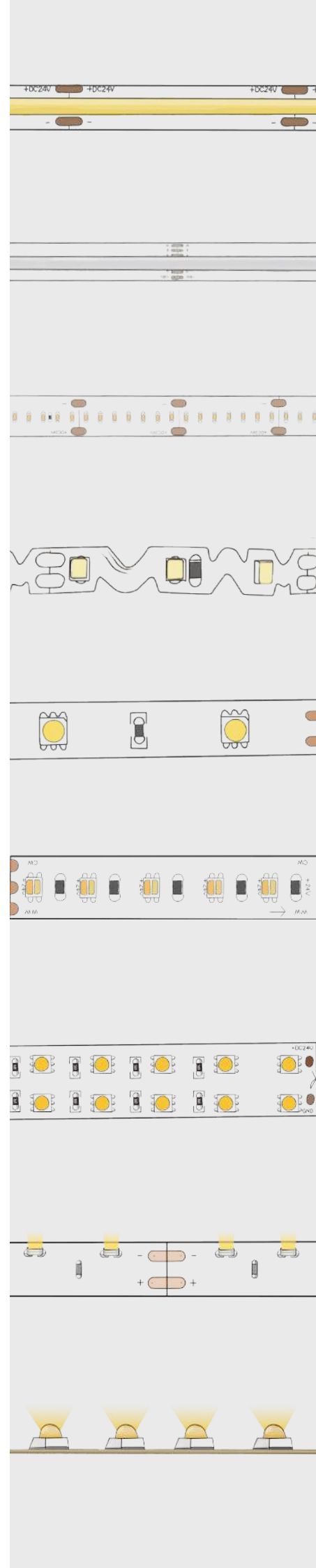




Production Specification

Top view Neon 20*20mm



E-mail: info@mingxue.cn

Tel: +86-755-27637866

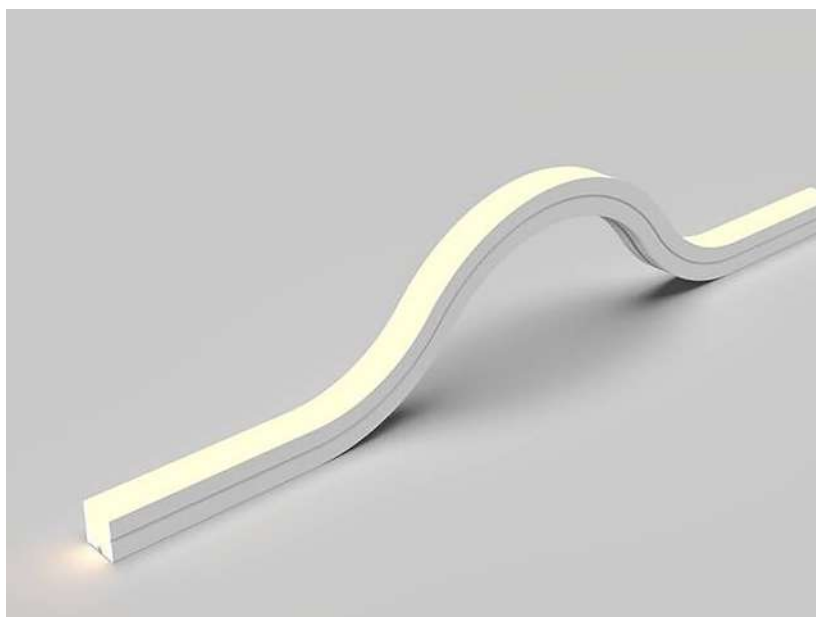
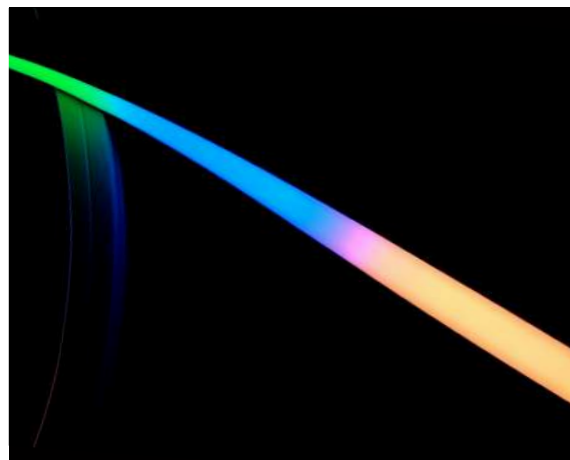
Address: 14 Floor,T3 Building, HIPAR technology building,Shiyan Town,
Bao'an District, Shenzhen,China.

Factory: Building 9 & 10, WanYang park ,baoyong industry road No 8 ,
west area baoyong industry zone, longjiang town, Shunde District, Foshan city.

www.mingxueled.com

Top bend 20*20mm Neon

- The ultra-wide horizontal curved luminous surface has soft light effect, no spot and no dark area, which meets the requirements of the exterior wall design;
- High light effect 2835 lamp beads can do white/CCT/DMX RGBW version, DMX compatible with high gray options, to provide rich color changing effect;
- IP67 waterproof grade, can be used indoors and outdoors, using silicone material, flame retardant, UV resistance;
- 5 years Warranty, 50000H life span Meet LM80 test certification.



Technical Spec






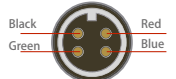



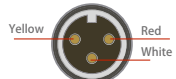



Item Code	Voltage	CCT	Power	Ra	Lm/m	Lm/ft	Lm/W	Angle	Min cut	Max Leg
MN328W120Q80-D027T1A161-2020	24V	2700K	14.4W/M	>80	864	263	60	120°	50mm	5M
MN328W120Q80-D030T1A161-2020	24V	3000K	14.4W/M	>80	912	278	63	120°	50mm	5M
MN328W120Q80-D040T1A161-2020	24V	4000K	14.4W/M	>80	979	299	68	120°	50mm	5M
MN328W120Q80-D050T1A161-2020	24V	5000K	14.4W/M	>80	979	299	68	120°	50mm	5M
MN328W120Q80-D065T1A161-2020	24V	6500K	14.4W/M	>80	979	299	68	120°	50mm	5M
MN328U192Q80-D027T1A162-2020	24V	CCT	24W/M	>80	1450	442	60	120°	62.5mm	5M
MN350A080Q00-D000T1A16-2020	24V	RGBW DMX	14.4W/M	>W80	N/A	N/A	N/A	120°	125mm	5M

LED Type :	2835 LED/5050LED	Input Current/m:	0.6~1.0A(0.18~0.3A/ft)
Color Rendering Index:	>80	Static Electricity:	1000V (ESD)
Beam Angle:	120°	Warranty:	5years
Operating Ambient temperature Ta:	-20~45°C[-4~113°F]	Lifespan :	50,000H
Pixel Segment& Address QTY:	8Pixel/M	PCB Distance :	12MM
		LEDs/Meter:	color 120LED/M CCT 240LED/M

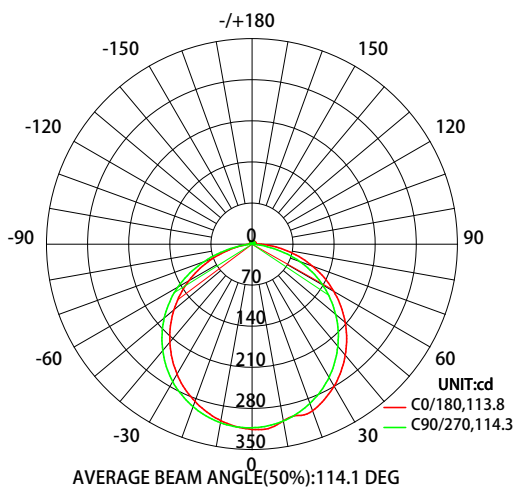
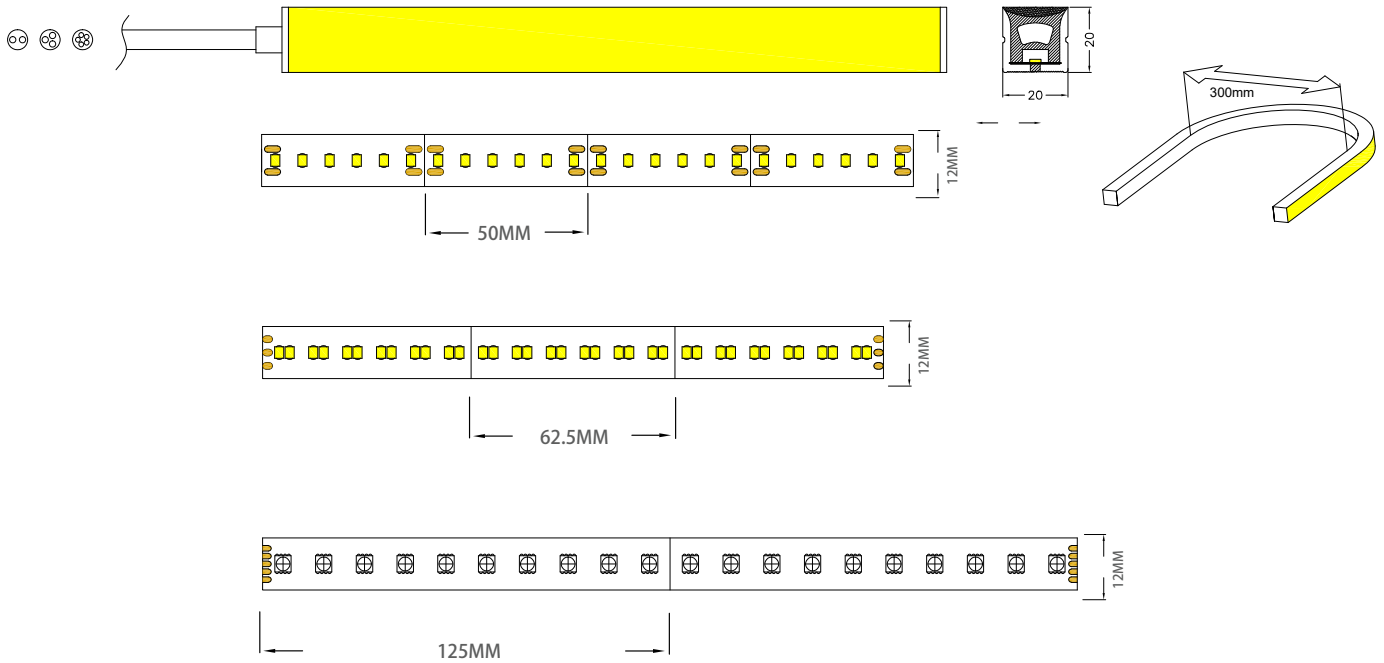
Notice:

- Luminous flux or CCT 2700K is 10% lower, or CCT 3000/3500K is 5% lower, for CCT 5000K/ 6500K is the same, compared with 4000K.
- Energy efficiency class of regulation (EU)201 9/2020 is E(CRI80) for 4000K and F(CRI80) for CCT, it varies depending on CRI and CCT.
- Applying with extra heat sink is not necessary with self-cooling capacity.
- The transmission direction of data must be from PI to Po following the arrow printing on FPC for DMX version, and can't be made by reverse connection, otherwise the strip will be out of control or even damaged.

ELECTRICAL WIRING COLOR CODES

MONOCOLOR	 Red: V+ Black: GND	 Red Black
CCT	 Red: V+ White: C Yellow: W	 Yellow Red White
RGB	 Black: V+ Red: R Green: G Blue: B	 Black Red Green Blue
RGBW	 Black: V+ Red: R Green: G Blue: B White: W	 Black Red Green Blue White
SPI	 Red: V+ Yellow: DAT White: GND	 Yellow Red White
DMX	 Black: GND White: PI/PO Blue: A Green: B Red: V+	 Black Red Green Blue White
RGBCCT	 Black: V+ Red: R Green: G Blue: B White: C Yellow: W	

DRAWING



Photometric of 1M strip

※Max.length data is based on 10% voltage drop

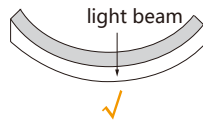
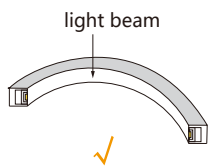
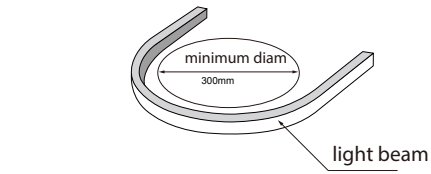
※Warranty is based on indoor use

Flux out: 670.0 lm

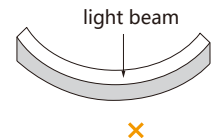
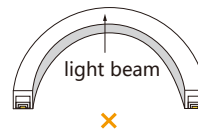
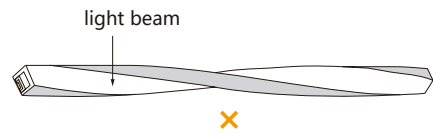
Height	Eavg, Emax	Angle: 113.79deg	Diameter
1m	89.94, 315.71 x		306.74cm
2m	22.48, 78.93 lx		613.48cm
3m	9.993, 35.08 lx		920.22cm
4m	5.621, 19.73 lx		1226.95cm
5m	3.597, 12.63 lx		1533.69cm
6m	2.498, 8.770 lx		1840.43cm
7m	1.835, 6.444 lx		2147.17cm
8m	1.405, 4.933 lx		2453.91cm
9m	1.110, 3.898 lx		2760.65cm
10m	0.8994, 3.157 lx		3067.38cm

Note: The Curves indicate the illuminated area and the average illumination when the luminaire is at different distance.

Bending Diagram



Correct bend



Wrong Bend

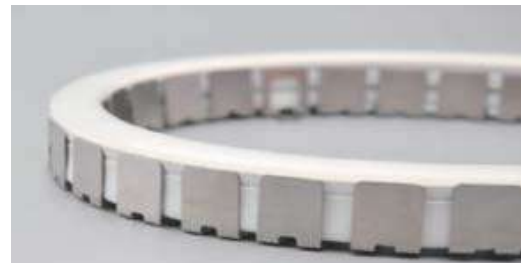
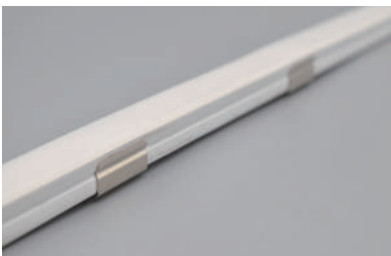
Intallation



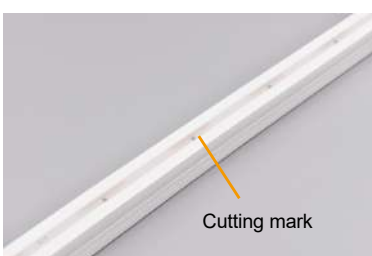
Clips
MX-01-002641
30*22*21.6mm(L x W x H)



Aluminum channel
MX-01-002647
1000x22x21.6mm(L x W x H)



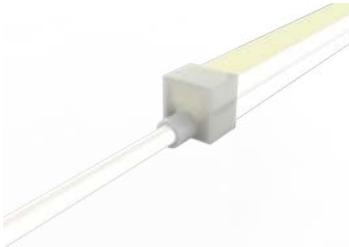
S shape Aluminum profile
MX-01-002642
1000x20.1x16.38mm(L x W x H)



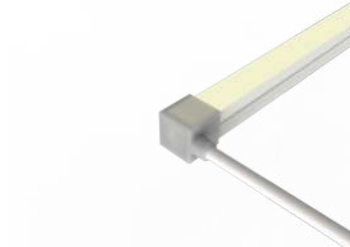
Note: There is a transparent widow at the back ,you can see the cutting mark.

|| Outlet wire way and cap

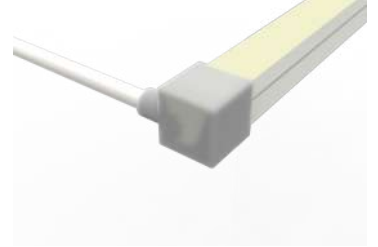
Note: Only show the outlet wire way and cap



Linear Outlet
Plug Fit Silicone Cap



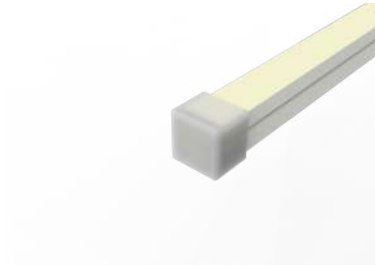
Right Outlet
Plug Fit Silicone Cap



Left Outlet
Plug Fit Silicone Cap



Bottom Outlet
Plug Fit Silicone Cap



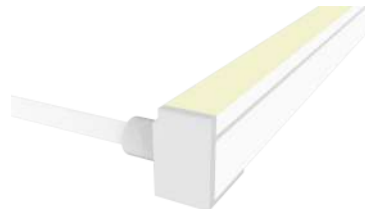
End cap
Plug Fit Silicone Cap



Linear Outlet
Injection Molded



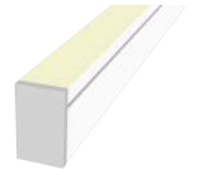
Right Outlet
Injection Molded



Left Outlet
Injection Molded

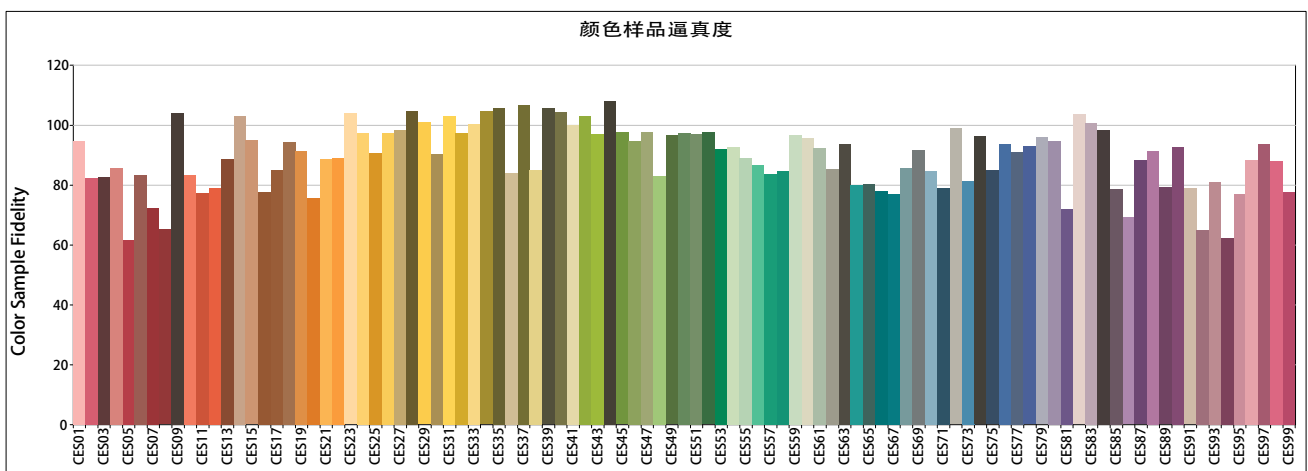
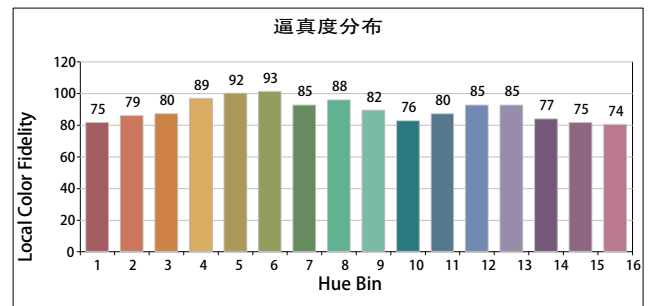
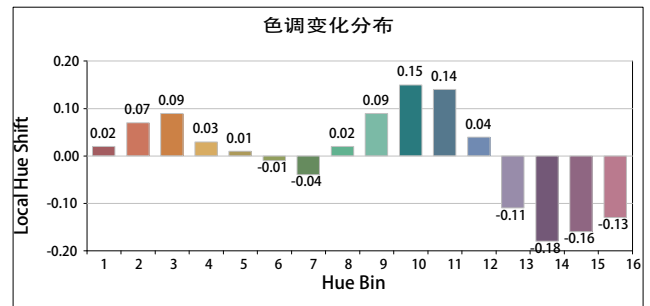
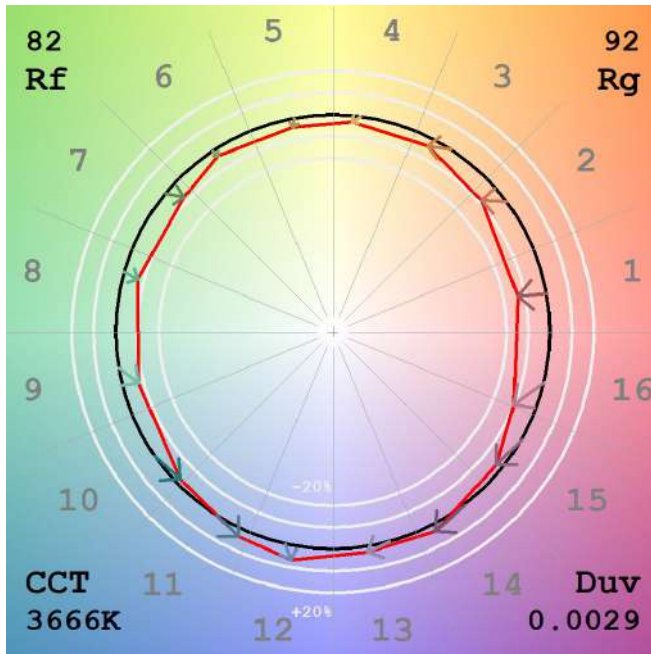
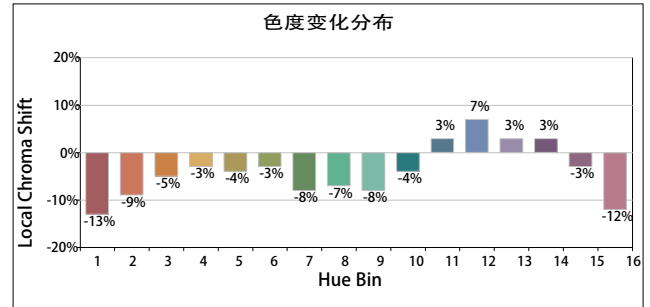
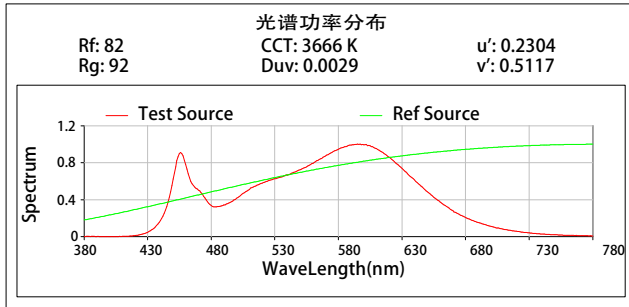


Bottom Injection Molded







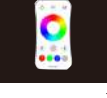







End Injection Molded

TM30



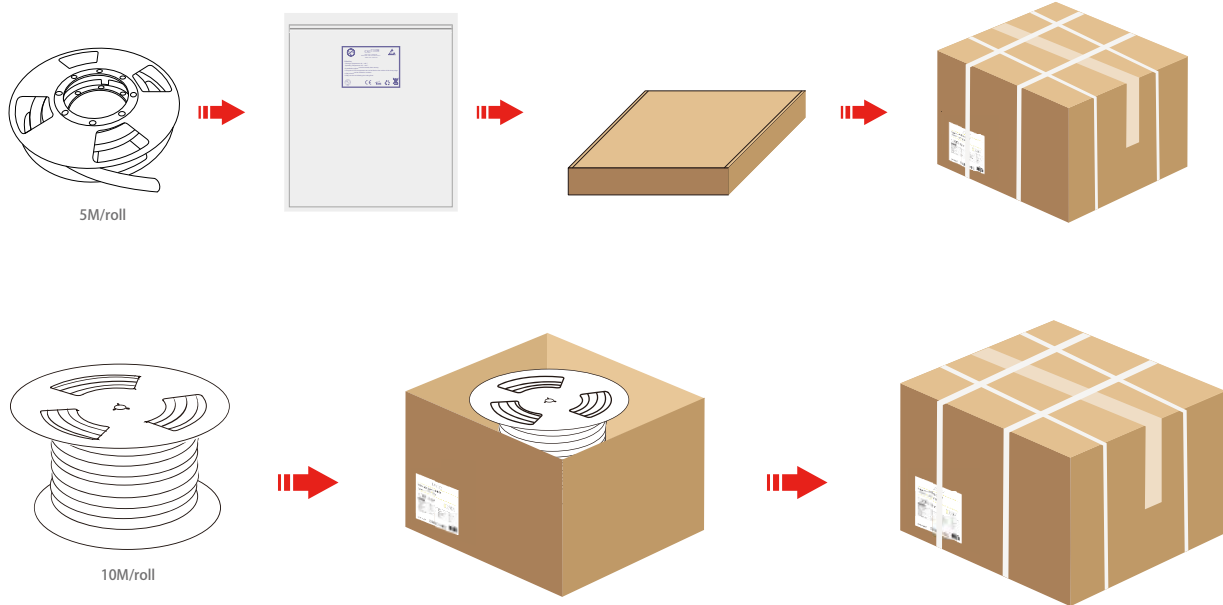
Controller

Picture	Item	Model	Spec	Match
	Monochrome remote	MX-03-030472	Output signal:RF(2.4GHz) Working voltage:3VDC(CR2032) Remote control distance:30m Working temperature:Ta:-30°C~+55°C	Use with Monochrome light strip
	Monochrome light controller	MX-03-030322	Input voltage:12-48VDC Output current:15A@12/24V-10A@36/48V Output Power:180W@12V-360W@24V 360W@36V-480W@48V Working temperature:Ta:-30°C~+55°C	Use with Monochrome light strip
	CCT remote	MX-03-030466	Output signal:RF(2.4GHz) Working voltage:3VDC(CR2032) Remote control distance:30m Working temperature:Ta:-30°C~+55°C	Use with CCT light
	Color temperature controller	MX-03-030437	Input voltage :12-24VDC Output current :2CH,5A/CH Output Power :2x(120-240)W Working temperature:Ta:-30°C~+55°C	Use with CCT light
	RGB remote	MX-03-030469	Output signal :RF(2.4GHz) Working voltage :3VDC(CR2032) Remote control distance:30m Working temperature:Ta:-30°C~+55°C	Use with RGB light
	RGB Controller	MX-03-030467	Input voltage :12-24VDC Output current :3CH,4A/CH Output Power :144-288W Working temperature:Ta:-30°C~+55°C	Use with RGB light
	RGBW remote	MX-03-030454	output signal:RF(2.4GHz) Working voltage:3VDC(CR2032) Remote control distance:30m Working temperature:-30°C~+55°C	Use with RGBW light
	RGBW Controller	MX-03-030455	Input Voltage:12-24 VDC; Output Current:4A*4CH, Max 6A/CH; 192W/384W (12V/24V)	Use with RGBW light
	MX-03-030475	LTSA512 DMX Master Controller	Input Voltage:5V DC Power Consumption:<2W Connection way:Mini USB Internal Memory:6000 steps@512Chs Output Connector:XLR-3 Transmission Signal:DXM512 PC Software:LTECH LED player	Use with DMX Pixel light
	MX-03-030479	DMX512 to SPI Pixel Decoder	(1)5-24VDC (2)Input Signal:DMX512/RDM+RF 2.4G Output signal:pixel signal (3)Control dots:1024 (4)Compatible with 37 kinds of Driving ICs;Numeric diaplay (5)Reverse Polarity Protection.	Use with SPI Pixel light
	MX-03-030458	SPI Controller	12-24VDC Input signal:RF2.4G,WORK WITH R9 remote Output signal:SPI(TTL) Control dots:1024 Compatible with 45 kinds of Driving ICs Reverse polarity protection	Use with SPI Pixel light
	MX-03-030459	RGB/RGBW SPI remote	Output signal:RF(2.4Hz) Working voltage:3VDC(CR2032) Remote control distance:30m Working temperature:-Ta30°C~+55°C	Use with SPI Pixel light

Reliability test of light

TEST TYPE	TESTING ITEM	TEST STANDARD	DESCRIPTION
PHOTOMETRIC TEST	Spectrum Analysis	LM 79	LM 79(lumen,CCT,CRI,XY,SDCM,wave length)
	Photometric Distribution	LM 79	LM 79(lumen intensity distribution&Lux diagram)
	Lumen Maintenance&Life Time	IES LM 80&IES TM28 GB/T24824-2009	LM 80&IES TM28
ELECTRICAL TEST	EMC Test	EMI & EMS	IEC 61547/GBT 18595 IEC 61000-3-2/GB 17625.1
MECHANICS & PHYSICE TESTING	Bending Test Vertical	Mingxue	Manufacturer-defined,100 cycles 3 times bending with 0.5m/s pulling speed
	Bending Test Horizontal	R2	Manufacturer-defined,100 cycles 3 times bending with 0.5m/s pulling speed
	Wrestling test	Mingxue	COB/CSP 500 / SMD 1000. cycles
	Swing Test	UL2388	UL2388,>750 cycles
	Tensile Test	IEC 60598-1; GB7000.1	Manufacture-defined,>the weight of light in maximum connection length whith both ends feed. With 30Nm if total cross section <0,75 or 60Nm force, pull wire 25 timesduring 1 sec. Mark displacement ≤ 2mm.
	Twist Test	Mingxue	Manufacturer-defined,>200 cycles in 720°
	Curl test	Mingxue	Back and forth 80-100 times
	IK06-08-10	IEC62262	IEC62262 The hammer spring Impact energy 0.7J
	Adhesion test	JB1256-77	3M 4229P hung on 2kg loads >7 hrs
	Drop test	IEC68-2-6	IEC68-2-6,GB/T2423/10/95
	Vibration test	ISTA-1A	bear up to 25,4mm amplitude in 14200 cycles
	Winding Test	IEC 60598-1; IEC 60598-2-21; GB-7000.1	φ 150mm cylinder, 60N pull, winding 10 times at (-25°C ±2°C) , and 10 times after(-15°C ±2°C, 16h).
	Electrical strength	IEC 60598-1; IEC 60598-2-21 GB-7000.1	500V
	Product accessories disassembly test	Mingxue	Product accessories are installed and adapted 5-10 times
ENVIRONMENT TESTING	Heating test	IEC 60598-1: 12.4	Sample to be tested under normal installation Under 1.06 times Rating Voltage After 30 minutes.
	Salt Spray Test	IEC 60068-2-11	5% salt solution concentration,5% salt water,35+/-2C for 72hrs
	High temperature and Humidity impact	IEC 60068-2-78 GB/T 2423.3	60+/-2° C for 168 hrs 60°C, 85%RH ,Test light decay data<3%
	Temperature Shock Test	IIEC60068	Manufacturer-defined,-40°C-60°C(typical temperature ange) 168H
	switch test	GB/T24824-2009	30s On, 30s Off, 15000 times;on/off every 30S, > 15000 cycles
	Lifetime aging test	Mingxue	Normal temperature 25°C
	Constant Temperature Test	Mingxue	Manufacturer-defined,60°C to -40° (typical temperature)
	Cold Bend Test	IEC 60598-1; IEC 60598-2-21 GB-7000.1	wound on mandrel,low-temperature (-15°C ±2°C, 16h), around the mandrel for two turns
	Cold Impact test	IEC 60598-1; IEC 60598-2-21 GB-7000.1	Low-temperature (-15°C ±5°C, 16h), hammer falls from a height of 100mm.
	UV Exposure Test	ASTMG154-06	ASTMG 154,ISO 4892-3, UVA@340nm ASTMG154-06, UVA-340 0.68W/m2 for 500 hrs
	IPX5 IPX6 IPX7 IPX8	IEC 60598-1; IEC 60598-2-21 GB-7000.1	IEC60529 IPX5/X6/ IPX7/X8

Packing



Safety Information

Application notes for led flexible strip

In order to drive LED flexible strip lights safely, it is absolutely necessary to operate them with an electronically stabilised power supply protecting against short circuits, overload and overheating.

To also ease the luminaire/installation approval, electronic control gear, power supply and all electronic accessories for LED or LED modules should carry "CE, or UL" mark and meet the latest safety standard.

- Please use 24VDC isolated power supply to drive the led strip, and the constant voltage source ripple less than 5%. Can't step-down the power by resistance-capacitance and non-isolated power supply driver led strip, etc.
- To ensure the longevity and reliability of the strips, please do not bend the arc diameter 60mm or less, do not fold to avoid damaging the lamp beads or broken.
- To ensure the life and environment of lights, in the use of force can not pull the power cord to avoid damage to prohibit collision LED lights.
- During the installation of positive and negative attention to the power cord, do not pick the wrong voltage power supply and the product are the same, so as to avoid damage to the product.
- LED lights should be stored in dry sealed environment, the proposed storage period should not be too long before using unpacking, the working temperature: -20 ~ +45, Storage temperature: -0 ~ +60, not waterproof lights band indoor use, relative humidity not higher than 70%.
- In practical applications, the power supply should leave 20% margin (recommend using only 80% of the power) in order to ensure a sufficient amount of voltage drive products
- Do not use any acidic, alkaline adhesive securement products (including not limited to glass, plastic, etc.)

