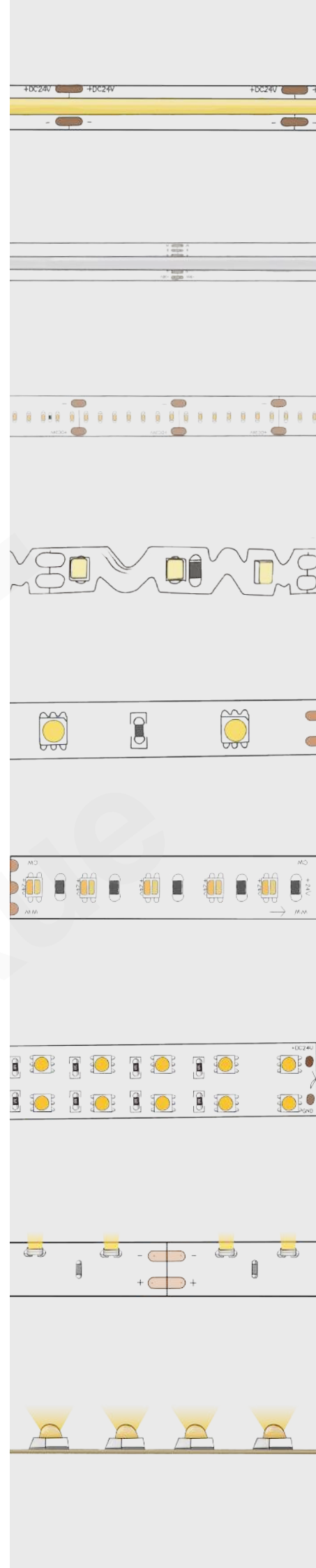




Production Specification

Top view 14*14mm
Anti-glare Neon UGR<16



www.mingxueled.com

E-mail: info@mingxue.cn

Tel: +86-755-27637866

Address: 14 Floor, T3 Building, HIPAR technology building, Shiyan Town, Bao'an District, Shenzhen, China.

Factory: Building 9 & 10, WanYang park, baoyong industry road No 8, west area baoyong industry zone, longjiang town, Shunde District, Foshan city.



14*14mm Anti-glare Neon

- 1- Flexible positive bending anti-glare neon, bending radius 200mm,UGR<16
- 2- Soft light, the use of special optical design and materials, can effectively reduce direct light, provide a softer lighting effect, avoid glare
- 3- High light transmittance, environmental silicone material,IP65;
- 4- Suitable for homes, offices, shops, hotels and other places
- 5- OEM ODM is acceptable



STRUCTURE

Item Code	CuttingLength (Min.)	Input voltage	Wattage	CCT/K	Color Rendering Index	Lm/m	Lm/ft	LM/w	IP Rate	Max.run length
MN328W140Q90-D027A6A12107N-1414ZA	50mm (1.97")	24V	14.4W/M 4.39W/FT)	2700k	>90	178	54	12	IP65	5M 16.4ft
MN328W140Q90-D030A6A12107N-1414ZA	50mm (1.97")	24V	14.4W/M 4.39W/FT)	3000k	>90	188	57	13	IP65	5M 16.4ft
MN328W140Q90-D040A6A12107N-1414ZA	50mm (1.97")	24V	14.4W/M 4.39W/FT)	4000k	>90	198	60	13	IP65	5M 16.4ft
MN328W140Q90-D050A6A12107N-1414ZA	50mm (1.97")	24V	14.4W/M 4.39W/FT)	5000k	>90	198	60	13	IP65	5M 16.4ft
MN328W140Q90-D065A6A12107N-1414ZA	50mm (1.97")	24V	14.4W/M 4.39W/FT)	6500k	>90	198	60	13	IP65	5M 16.4ft

The above parameters are the version without spray handle oil

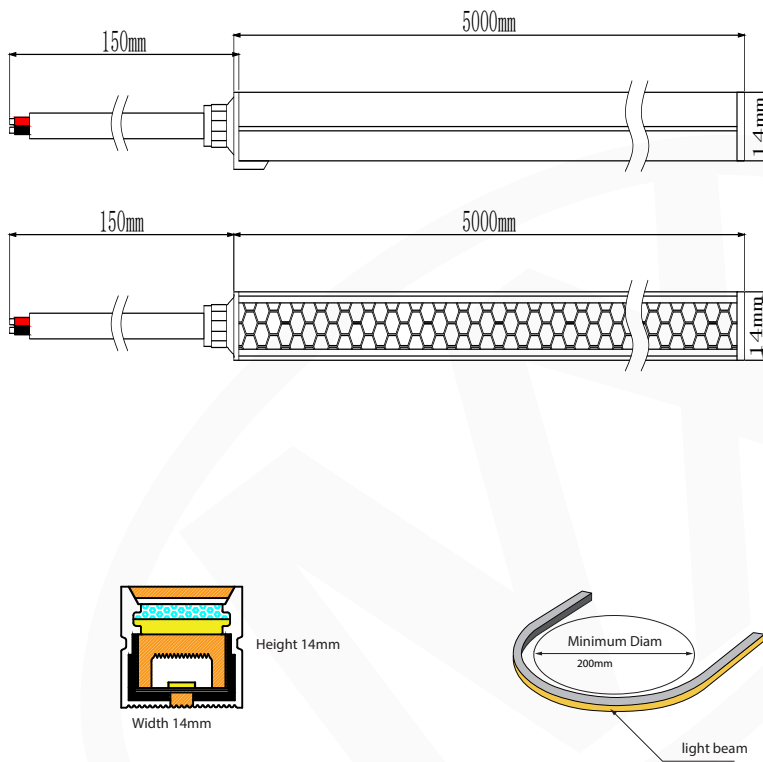
Optical parameter

LED Type:	SMD2835
Color Rendering Index:	>90
CCT Range:	2700-6500K
Irritation Angle:	120°
Light Efficiency:	12-13Lm/w
Lumen Output:	178-198Lm/m(54~60Lm/ft)
UGR:	<16

Electric parameter

Input Current:	0.6A/m(0.19A/ft)
Input Voltage:	DC24V
Power:	14.4W/m(4.39W/ft)
Static Electricity:	2000V (ESD)
LEDs/Meter:	140LEDs/m
Size of Section:	50mm(1.97")
LEDs of Section	7LEDs

DRAWING



ELECTRICAL WIRING COLOR CODES

○ MONOCOLOR

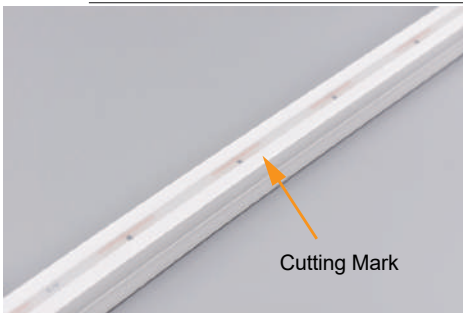
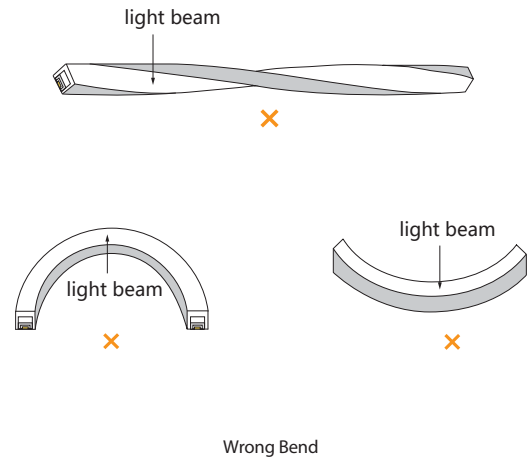
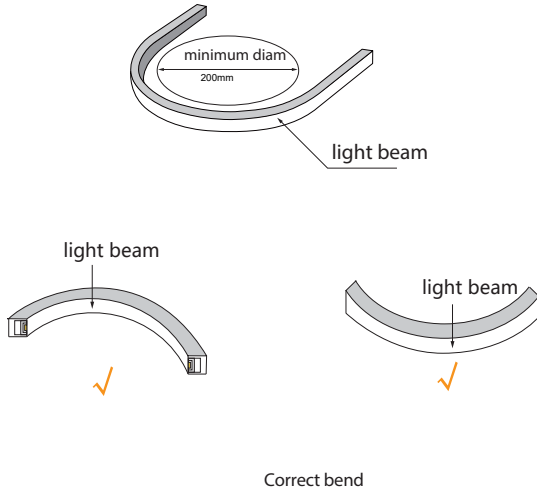
Red: V+
Black: GND



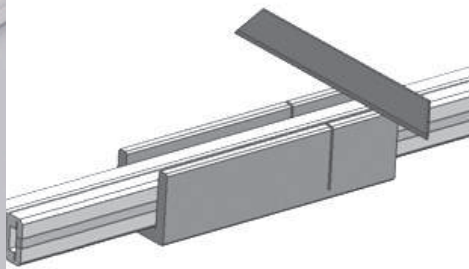
Reliability test of light

TEST TYPE	TESTING ITEM	TEST STANDARD	DESCRIPTION
PHOTOMETRIC TEST	Spectrum Analysis	LM 79	LM 79(lumen,CCT,CRI,XY,SDCM,wave length)
	Photometric Distribution	LM 79	LM 79(lumen intensity distribution&Lux diagram)
	Lumen Maintenance&Life Time	IES LM 80&IES TM28 GB/T24824-2009	LM 80&IES TM28
ELECTRICAL TEST	EMC Test	EMI & EMS	IEC 61547/GBT 18595 IEC 61000-3-2/GB 17625.1
MECHANICS & PHYSICE TESTING	Bending Test Vertical	Mingxue	Manufacturer-defined,100 cycles 3 times bending with 0.5m/s pulling speed
	Bending Test Horizontal	R2	Manufacturer-defined,100 cycles 3 times bending with 0.5m/s pulling speed
	Wrestling test	Mingxue	COB/CSP 500 / SMD 1000. cycles
	Swing Test	UL2388	UL2388,>750 cycles
	Tensile Test	IEC 60598-1; GB7000.1	Manufacture-defined,>the weight of light in maximum connection length whith both ends feed. With 30Nm if total cross section <0,75 or 60Nm force, pull wire 25 timesduring 1 sec. Mark displacement ≤ 2mm.
	Twist Test	Mingxue	Manufacturer-defined,>200 cycles in 720°
	Curl test	Mingxue	Back and forth 80-100 times
	IK06-08-10	IEC62262	IEC62262 The hammer spring Impact energy 0.7J
	Adhesion test	JB1256-77	3M 4229P hung on 2kg loads >7 hrs
	Drop test	IEC68-2-6	IEC68-2-6,GB/T2423/10/95
	Vibration test	ISTA-1A	bear up to 25,4mm amplitude in 14200 cycles
	Winding Test	IEC 60598-1; IEC 60598-2-21; GB-7000.1	φ150mm cylinder, 60N pull, winding 10 times at (-25°C ±2°C) , and 10 times after(-15°C ±2°C, 16h).
	Electrical strength	IEC 60598-1; IEC 60598-2-21 GB-7000.1	500V
	Product accessories disassembly test	Mingxue	Product accessories are installed and adapted 5-10 times
ENVIRONMENT TESTING	Heating test	IEC 60598-1: 12.4	Sample to be tested under normal installation Under 1.06 times Rating Voltage After 30 minutes.
	Salt Spray Test	IEC 60068-2-11	5% salt solution concentration,5% salt water,35+/-2C for 72hrs
	High temperature and Humidity impact	IEC 60068-2-78 GB/T 2423.3	60+/-2° C for 168 hrs 60°C, 85%RH ,Test light decay data<3%
	Temperature Shock Test	IIEC60068	Manufacturer-defined,-40°C-60°C(typical temperature ange) 168H
	switch test	GB/T24824-2009	30s On, 30s Off, 15000 times;on/off every 30S, > 15000 cycles
	Lifetime aging test	Mingxue	Normal temperature 25°C
	Constant Temperature Test	Mingxue	Manufacturer-defined,60°C to -40° (typical temperature)
	Cold Bend Test	IEC 60598-1; IEC 60598-2-21 GB-7000.1	wound on mandrel,low-temperature (-15°C ±2°C, 16h), around the mandrel for two turns
	Cold Impact test	IEC 60598-1; IEC 60598-2-21 GB-7000.1	Low-temperature (-15°C ±5°C, 16h), hammer falls from a height of 100mm.
	UV Exposure Test	ASTMG154-06	ASTMG 154,ISO 4892-3, UVA@340nm ASTMG154-06, UVA-340 0.68W/m2 for 500 hrs
	IPX5 IPX6 IPX7 IPX8	IEC 60598-1; IEC 60598-2-21 GB-7000.1	IEC60529 IPX5/X6/ IPX7/X8

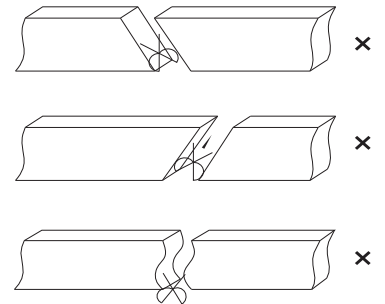
Bend instruction



Note: There is a transparent widow at the back ,you can see the cutting mark.



Use the tooling to cut the flex precisely at the cutting mark vertically.



Do not cut as the pictures shows.



Clips
MX-01-003189
L30*W16.4*H16.3±0.3mm

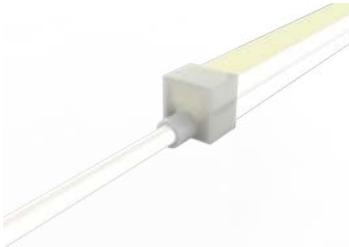


Aluminum channel:
MX-01-003295
L970*W16.4*H16.3±0.3mm

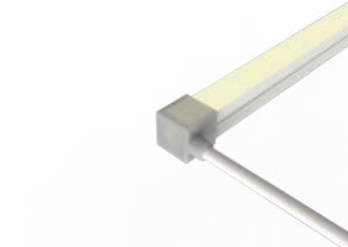


|| Outlet wire way and cap

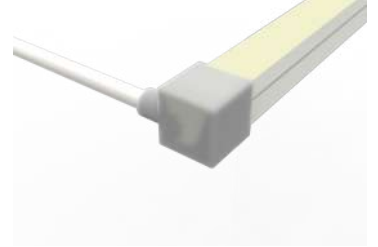
Note: Only show the outlet wire way and cap



Linear Outlet
Plug Fit Silicone Cap



Right Outlet
Plug Fit Silicone Cap



Left Outlet
Plug Fit Silicone Cap



Bottom Outlet
Plug Fit Silicone Cap



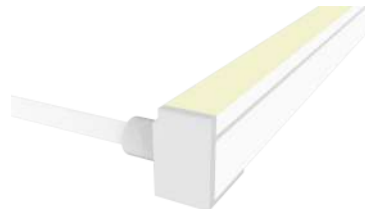
End cap
Plug Fit Silicone Cap



Linear Outlet
Injection Molded



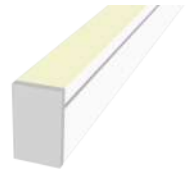
Right Outlet
Injection Molded



Left Outlet
Injection Molded



Bottom Injection Molded



End Injection Molded

Packing



Safety Information

Application notes for led flexiable strip

In order to drive LED flexible strip lights safely, it is absolutely necessary to operate them with an electronically stabilised power supply protecting against short circuits, overload and overheating.

To also ease the luminaire/installation approval, electronic control gear, power supply and all electronic accessories for LED or LED modules should carry "CE, or UL" mark and meet the latest safety standard.

- Please use 24VDC isolated power supply to drive the led strip, and the constant voltage source ripple less than 5%. Can't step-down the power by resistance-capacitance and non-isolated power supply driver led strip, etc.
- To ensure the longevity and reliability of the strips, please do not bend the arc diameter 60mm or less, do not fold to avoid damaging the lamp beads or broken.
- To ensure the life and environment of lights, in the use of force can not pull the power cord to avoid damage to prohibit collision LED lights.
- During the installation of positive and negative attention to the power cord, do not pick the wrong voltage power supply and the product are the same, so as to avoid damage to the product.
- LED lights should be stored in dry sealed environment, the proposed storage period should not be too long before using unpacking, the working temperature: -20 ~ +45, Storage temperature: -0 ~ +60, not waterproof lights band indoor use, relative humidity not higher than 70%.
- In practical applications, the power supply should leave 20% margin (recommend using only 80% of the power) in order to ensure a sufficient amount of voltage drive products
- Do not use any acidic, alkaline adhesive securement products (including not limited to glass, plastic, etc.)

